

FLOATING CRANE KOCA SEYIT



Name	: KOCA SEYİT	Generator	: Cummins 375 kVA 60Hz 440 V
Type	: Floating Crane	Free Deck Space	: 560 m ²
Flag	: Sierra Leone	Deck Load Capacity	: 3T/m ²
Call Sign	: 9LU2363	Crane	: Liebherr
Year of Built	: 2016	Type	: Marine Crane
Place of Built	: Yalova / Turkey	Model	: Bos 80/1000
LOA	: 40.00 m	Boom Length	: 38,5 m
Breadth	: 16.00 m	SWL	: 10m / 70T
Depth	: 3.00 m	Mooring System	: 4 Point Mooring
GRT	: 493	Windlass	: 4 nos, 10 T
NRT	: 148		
Draught (scatling)	: 0.80 m		
Air Draft	: 13.7 m		

 **ARAS MARINE**
www.aras-marine.com

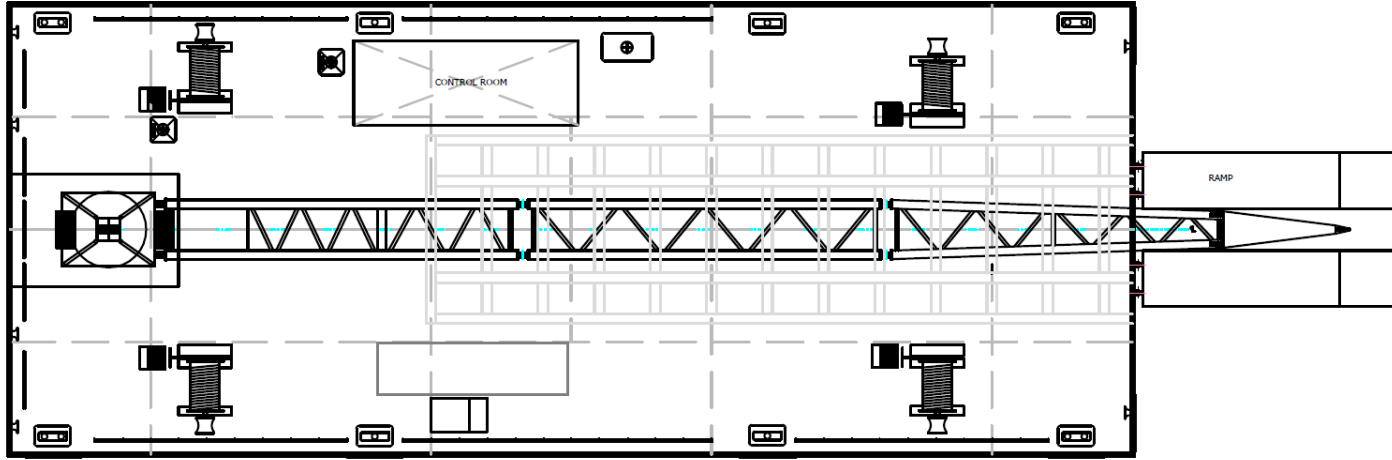
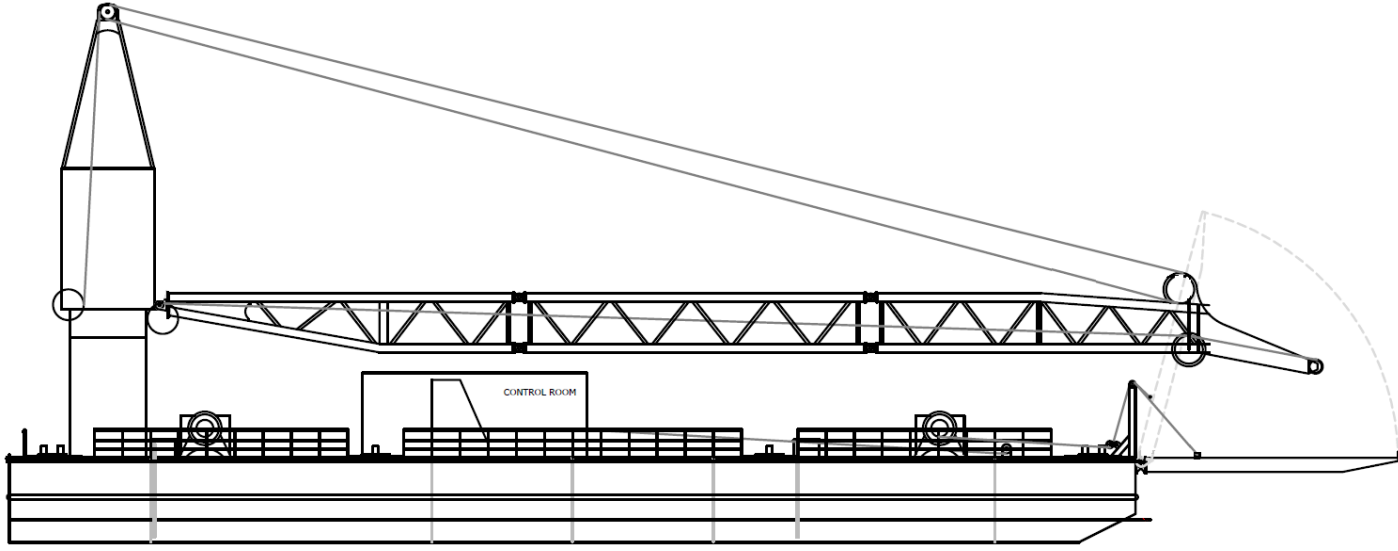
ARAS DENİZ İNŞAAT A.Ş.
ARAS MARINE CONSTRUCTION CO.
Postane Mah. Rauf Orbay Cad. No.233
34940 Tuzla / İSTANBUL - TÜRKİYE

Tel: +90 (216) 446 53 09 • Faks: +90 (216) 446 13 39



www.aras-marine.com

FLOATING CRANE KOCA SEYİT



ARAS MARINE
www.aras-marine.com

ARAS DENİZ İNŞAAT A.Ş.
ARAS MARINE CONSTRUCTION CO.
Postane Mah. Rauf Orbay Cad. No.233
34940 Tuzla / İSTANBUL - TÜRKİYE

Tel: +90 (216) 446 53 09 • Faks: +90 (216) 446 13 39



www.aras-marine.com